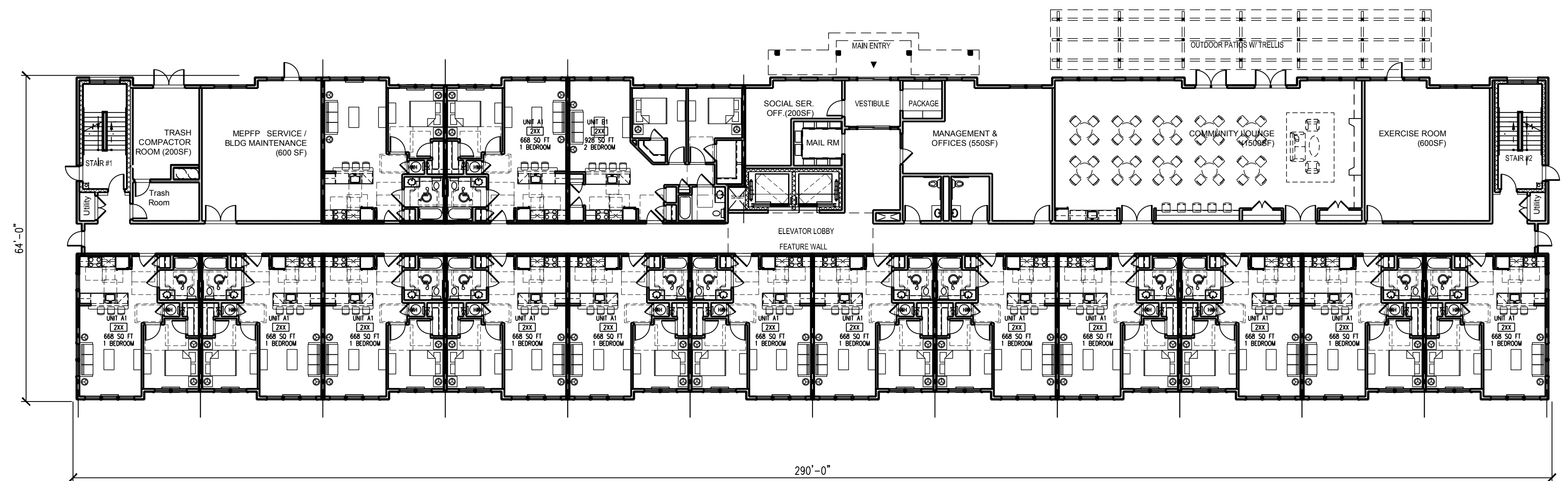


TYPICAL FLOOR PLAN (2ND ~3RD) (17,830 SF/FL)

1/16" = 1'-0"

UNIT MATRIX (SENIOR HOUSING)				
# OF BEDROOMS	FIRST FLOOR	SECOND FLOOR	THIRD FLOOR	TOTAL PER UNIT TYPE
1 BR	14	20	20	54
2 BR	1	1	1	3
TOTAL:	15	21	21	TOTAL: 57

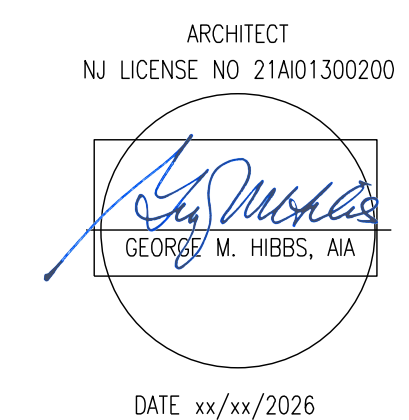


FIRST FLOOR PLAN - COMMERCIAL SPACE DETACHED (17,830 SF)

1/16" = 1'-0"

Evesham Senior Housing - Floor Plans

May 18, 2026



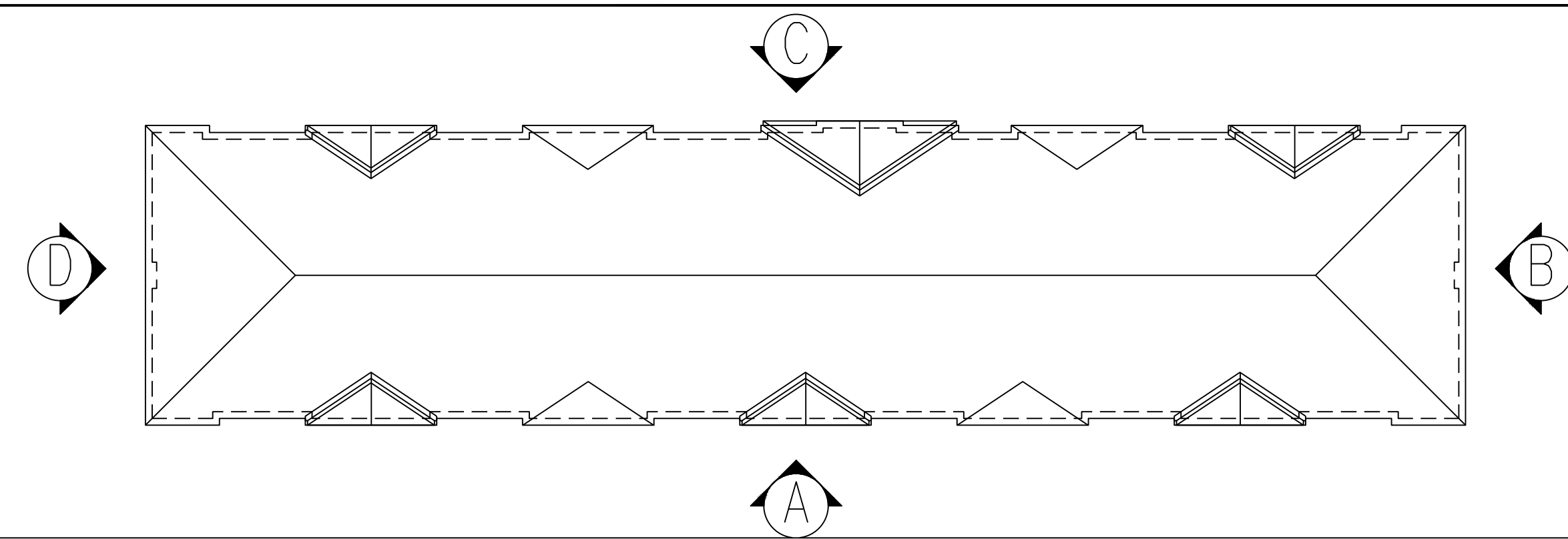
Clarke Caton Hintz
 Architecture
 Planning
 Landscape Architecture



DATE xx/xx/2026

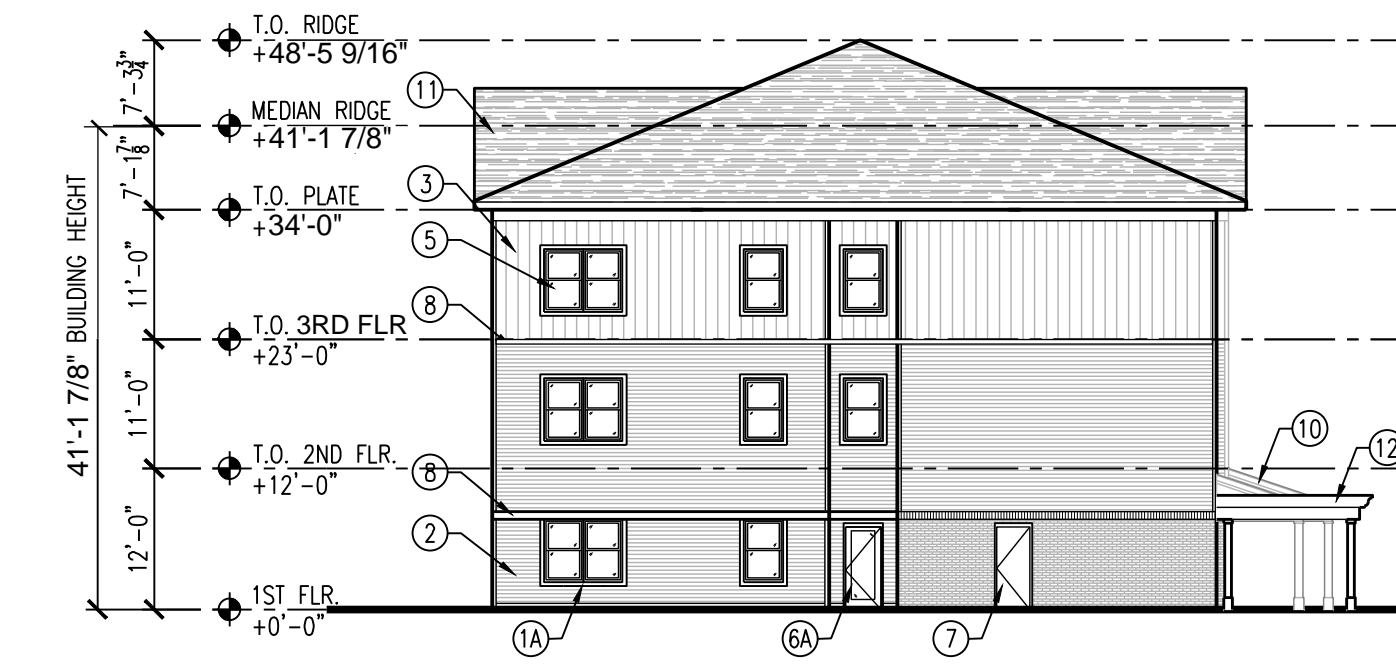
ELEVATION KEYNOTES

01 4" THICK BRICK VENEER COLOR: BELGIAN GRAY	05 ENERGY EFFICIENT SINGLE HUNG FIBREX COMPOSITE WINDOWS COLOR: WHITE	09 EXHAUST LOUVERS COLOR: TO MATCH SIDING OR BRICK PER LOCATIONS
01A 4" BRICK VENEER, ROWLOCK COURSE COLOR: BELGIAN GRAY	06A ANODIZED ALUMINUM STOREFRONT DOOR COLOR: WHITE	10 ANODIZED ALUMINUM ENTRANCE CANOPY FASCIA BOARD
01B 4" BRICK VENEER, SOLDIER COURSE COLOR: BELGIAN GRAY	06B ANODIZED ALUMINUM STOREFRONT SIDELIGHT COLOR: WHITE	11 GLASS FIBER-REINFORCED ASPHALT SHINGLES COLOR: SLATE
02 4" HORIZONTAL DUTCH LAP COMPOSITE SIDING COLOR: BONE	07 HOLLOW METAL DOOR COLOR: TO MATCH SIDING OR BRICK	12 CUSTOM CELLULAR PVC WRAPPED WOOD PERGOLA
03 4" COMPOSITE ACCENT BOARD & BATTEN SIDING COLOR: ASPEN WHITE	08 COMPOSITE BOARD TRIM / PANEL COLOR: WHITE	
04 HARDIE PANEL SIDING COLOR: WHITE		



MATERIAL KEY

KEY PLAN



A SOUTH ELEVATION

1/16" = 1'-0"

B EAST ELEVATION

1/16" = 1'-0"



C NORTH ELEVATION

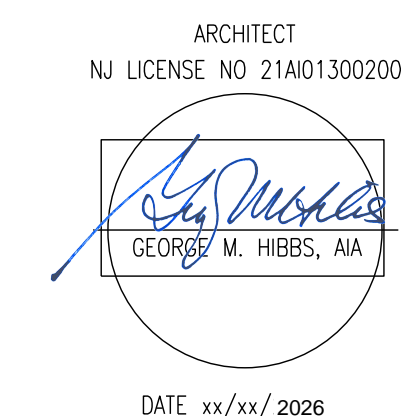
1/16" = 1'-0"

D WEST ELEVATION

1/16" = 1'-0"

Evesham Senior Housing - Elevations

May 18, 2026



Clarke Caton Hintz
Architecture
Planning
Landscape Architecture

