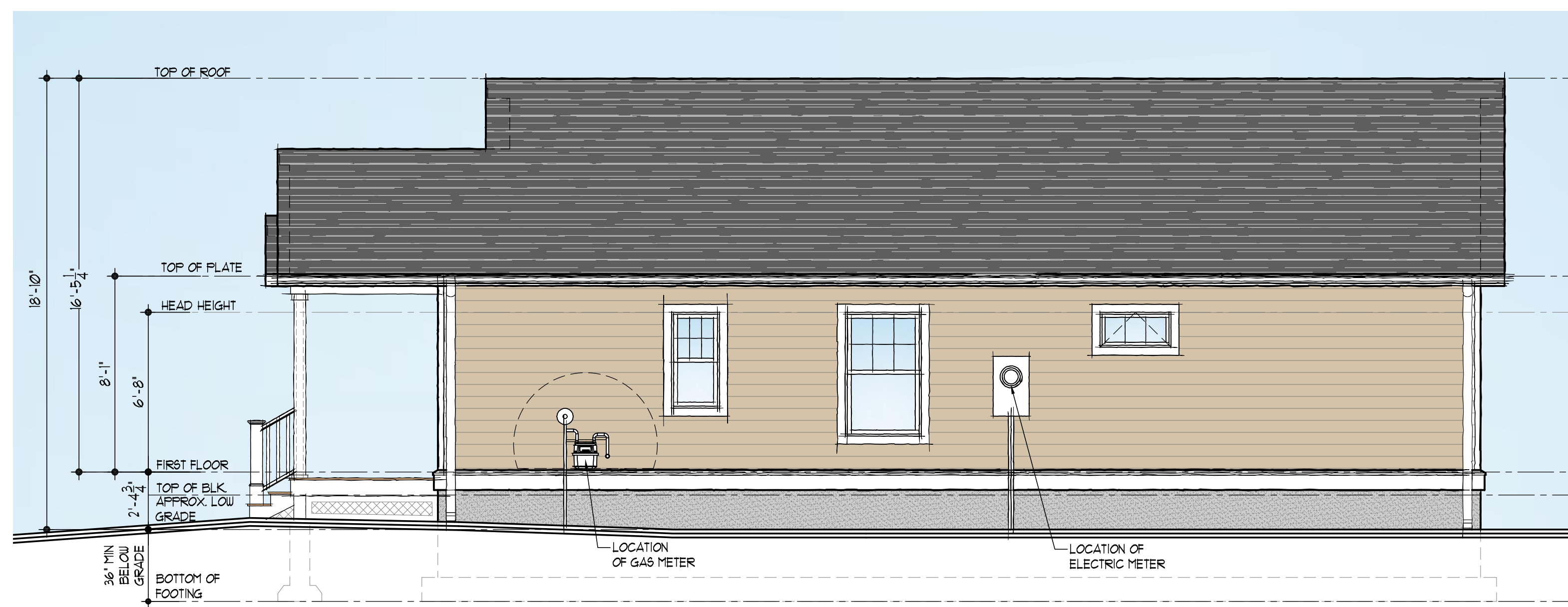
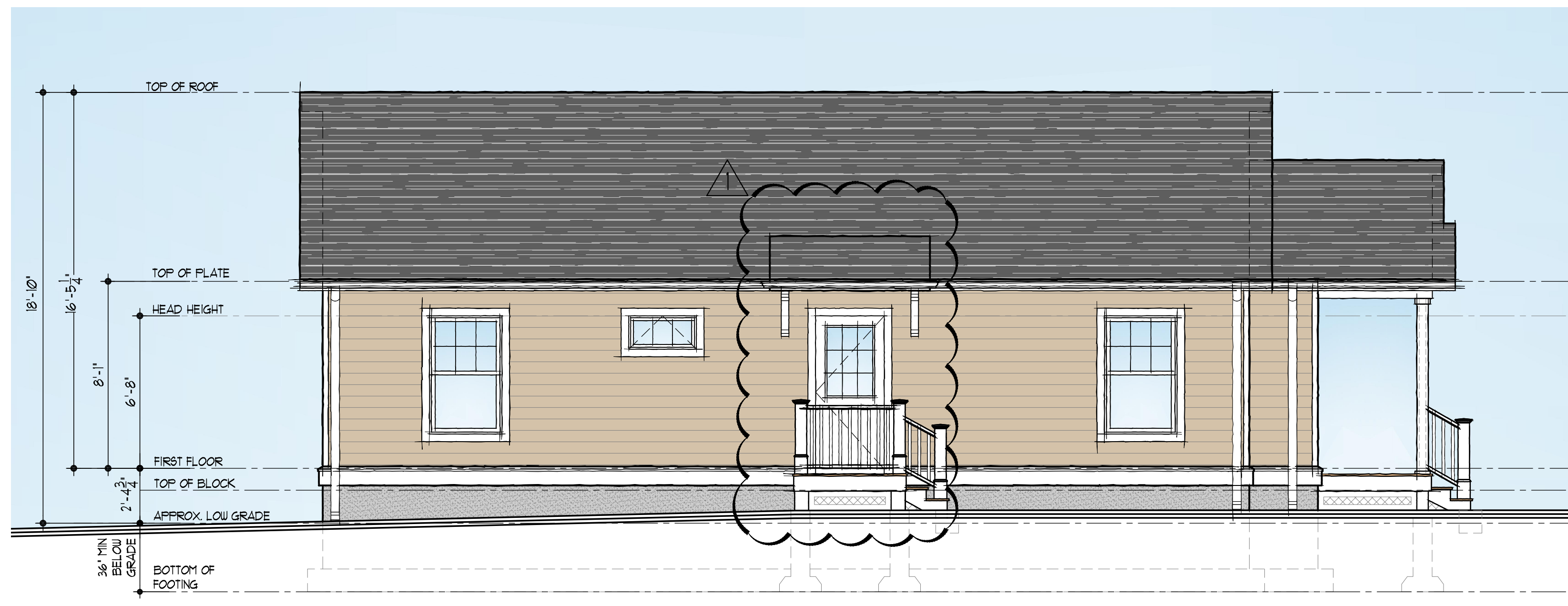


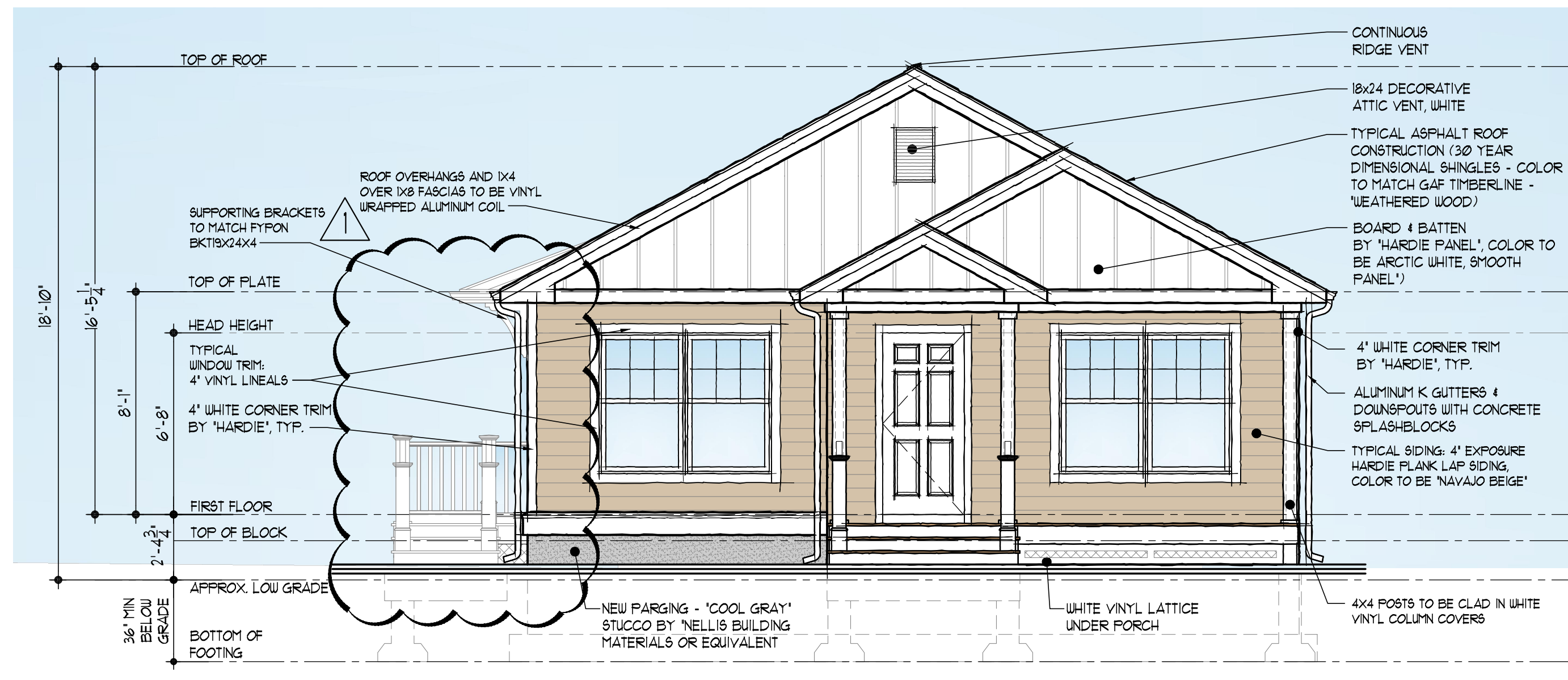
5 REAR ELEVATION
SCALE: 1/4"=1'-0"



4 RIGHT ELEVATION
SCALE: 1/4"=1'-0"



3 LEFT ELEVATION
SCALE: 1/4"=1'-0"



2 FRONT ELEVATION
SCALE: 1/4"=1'-0"

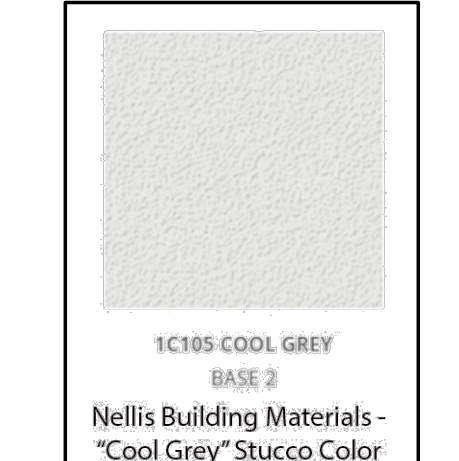
BOARD CHAIRPERSON: _____ DATE: _____
 BOARD ENGINEER: _____ DATE: _____
 BOARD SECRETARY: _____ DATE: _____



GAF Timberline Shingles - "Weathered Wood" Color



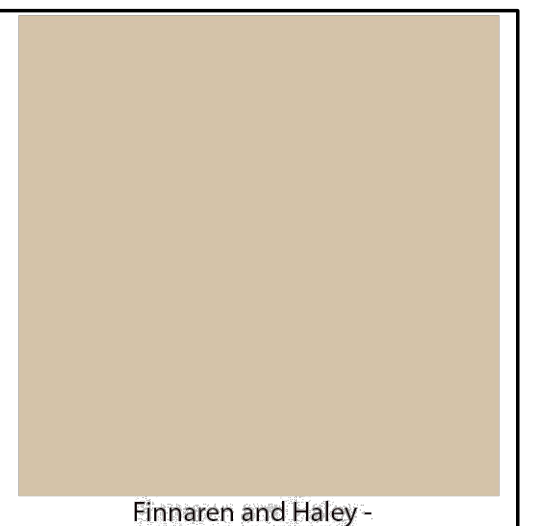
Hardie Trim Batten Boards - "Smooth Grain, Arctic White"



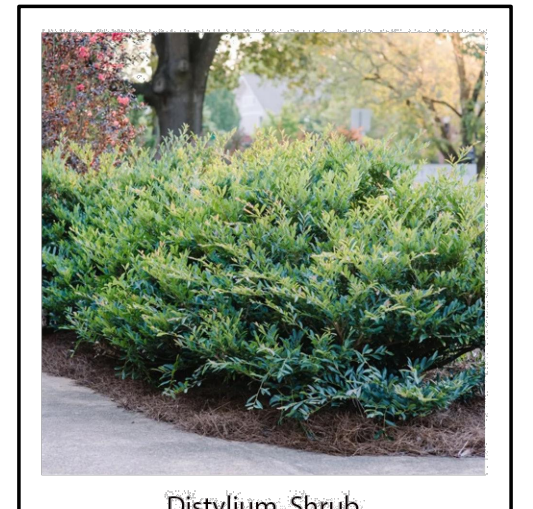
1C105 COOL GREY BASE 2 Nellis Building Materials - "Cool Grey" Stucco Color



Hardie Plank Smooth Siding - "Navajo Beige"



Finnaren and Haley - "Authentic Colors of Philadelphia" "Independence Hall White"



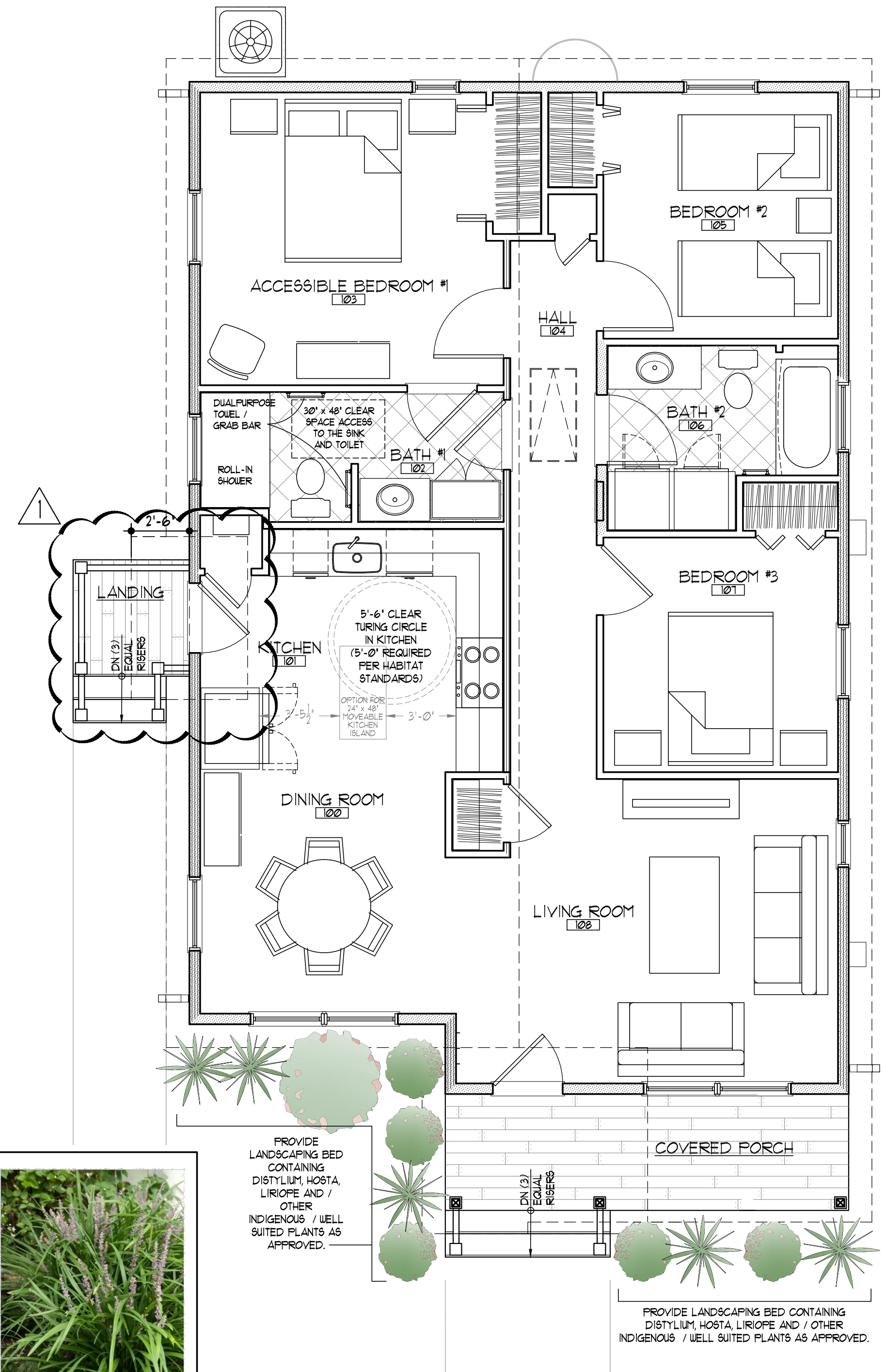
Distylium, Shrub



Hosta, Flowering plant

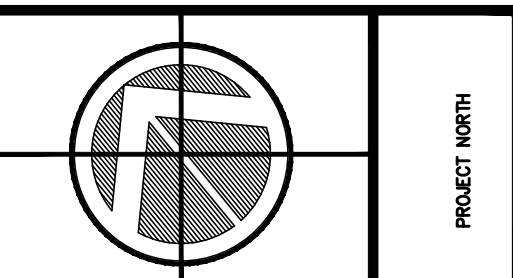


Liriope, Groundcover




1 FIRST FLOOR PLAN
SCALE: 1/4"=1'-0"

OSK DESIGN PARTNERS, PA
 ARCHITECTS & LAND PLANNERS
 9616 SECOND AVENUE, SUITE 201
 STONE HARBOR, NEW JERSEY 08247
 PHONE: (856)-854-0580 FAX: (856)-854-0993
 WWW.OSKDP.COM
 PRINCIPAL: PAUL A. KESS, AIA, PP, NCARB SENIOR ASSOCIATE: DANIEL A. SHOUSKY, AIA, PP, NCARB
 PARTNER: GERALD S. BLACKMAN, JR. AIA, PP, NCARB SENIOR ASSOCIATE: STEVEN J. BOLOGNO, AIA
 PARTNER: BRAD VAMBERG, AIA, NCARB LEAD SENIOR ASSOCIATE: ALLISON RIFE BURKARD, AIA, NCARB
 PARTNER: ANDIS G. LEIDOLF, AIA, NCARB, LEAD AP
 REGISTERED IN: • DELAWARE • FLORIDA • GEORGIA • MARYLAND • MASSACHUSETTS
 • NEW JERSEY • NEW YORK • PENNSYLVANIA • VIRGINIA • WEST VIRGINIA • WISCONSIN



PROJECT
HABITAT FOR HUMANITY
 38 OAK AVENUE
 EVESHAM, NEW JERSEY
 DWG. TITLE
 DESIGN PLAN AND ELEVATIONS

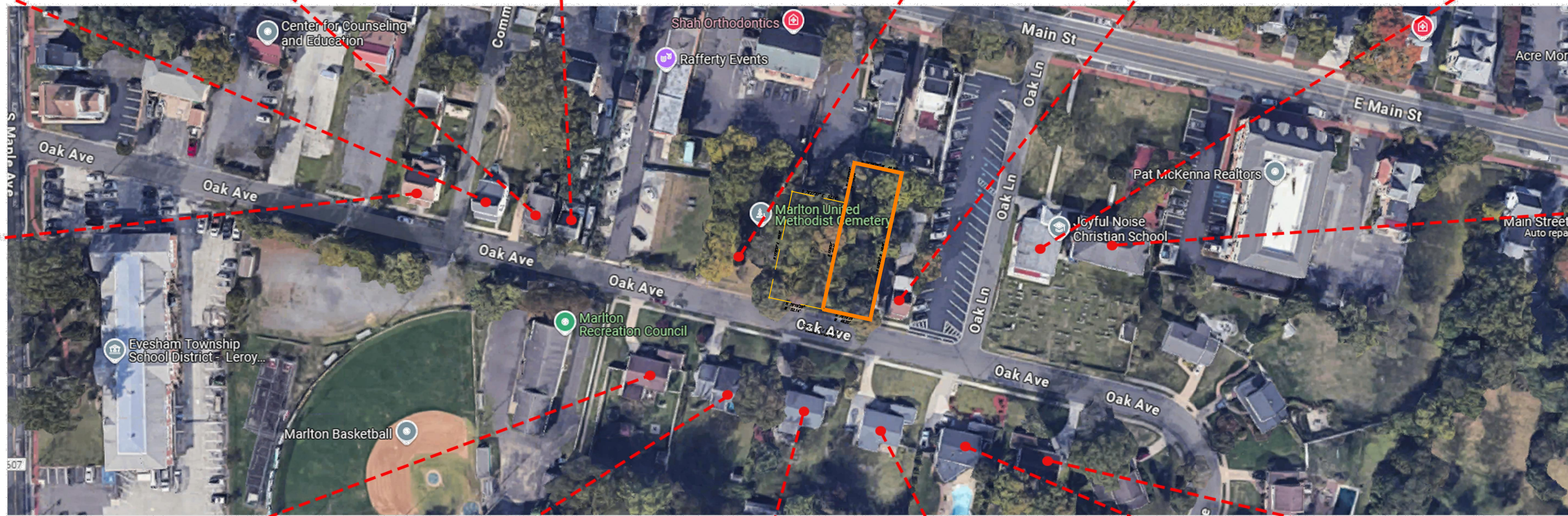
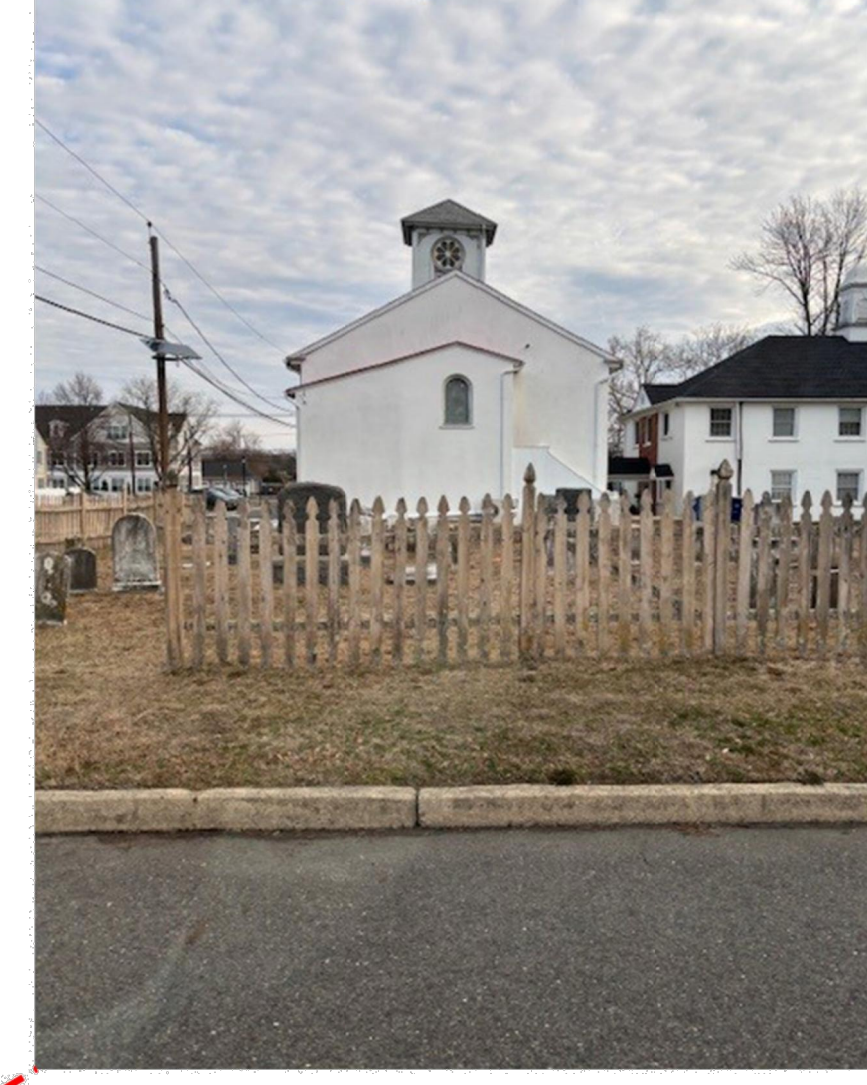
CONTRACTOR SHALL CHECK & VERIFY ALL FIELD CONDITIONS PRIOR TO STARTING CONSTRUCTION.

 PAUL A. KESS
 NC LICENSE #101

NO.	DESIGN REVISIONS	DATE
		9/16/25

DRAWN BY: ML
 CHECKED BY: PAK
 DATE: 6/26/25
 SCALE: AS NOTED

JOB NO. 165939

PD-2



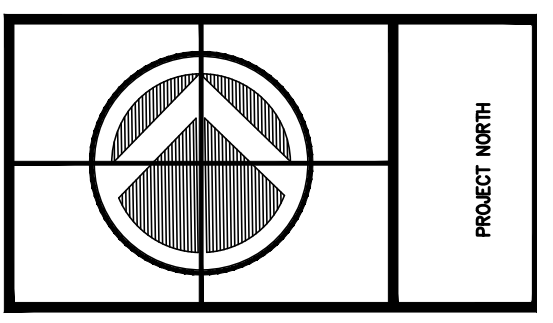
1 DIAGRAM SHOWING SURROUNDING PROPERTIES
NOT TO SCALE

BOARD CHAIRPERSON: _____ DATE: _____
BOARD ENGINEER: _____ DATE: _____
BOARD SECRETARY: _____ DATE: _____

OSK DESIGN PARTNERS, PA
ARCHITECTS & LAND PLANNERS
9616 SECOND AVENUE, SUITE 201
COLLINGSWOOD, NEW JERSEY 08247
PHONE: (856)-854-0580 FAX: (856)-854-0993 WEB: www.oskdp.com

FOUNDER: JOHN J. OLIVERI (1956-1999)
PRINCIPAL: PAUL A. KISS, AIA, PP, NCARB SENIOR ASSOCIATE: DANIEL A. SHOUSKY, AIA, PP, NCARB
PARTNER: GERALD S. BLACKMAN, JR. AIA, PP, NCARB SENIOR ASSOCIATE: STEVEN J. BOLOGNO, AIA
PARTNER: BRAD SWARTZBERG, AIA, NCARB, LEED AP SENIOR ASSOCIATE: ALLISON RUTE BURKARD, AIA, NCARB
PARTNER: ANDIS G. LEIDT, AIA, NCARB, LEED AP

REGISTERED IN: • DELAWARE • FLORIDA • GEORGIA • MARYLAND • MASSACHUSETTS
• NEW JERSEY • NEW YORK • PENNSYLVANIA • VIRGINIA • WEST VIRGINIA • WISCONSIN



PROJECT
HABITAT FOR HUMANITY
38 OAK AVENUE
EVESHAM, NEW JERSEY

DWG. TITLE
DIAGRAMS

CONTRACTOR SHALL CHECK & SIGN OFF ON ALL FIELD CONDITIONS PRIOR TO STARTING CONSTRUCTION.

[Signature]
PAUL A. KISS
NJ LICENSE #1011

NO.	DESCRIPTION	DATE

REVISION SCHEDULE

DRAWN BY: ML
CHECKED BY: PAK
DATE: 6/26/25
SCALE: AS NOTED

JOB NO. 165939

PB-3

FILE PATH: D:\Production\OSK_Residential\OSK_0854_0580\165939 - Habitat-206-209 Oak Ave\Drawings\OSK_36_AND_38_OAK_AVE_Paving_Board - revised 9.11.25 SAVED 9/22/2025 2:14 PM PLOTTED 9/23/25 SAVED BY: mlucero