

KEY

**BOHLER**  
 SITE CIVIL AND CONSULTING ENGINEERING  
 PROGRAM MANAGEMENT  
 LANDSCAPE ARCHITECTURE  
 SUSTAINABLE DESIGN  
 PERMITTING SERVICES  
 TRANSPORTATION SERVICES

**REVISIONS**

REV	DATE	COMMENT	DRAWN BY	CHECKED BY
1	07/22/2025	PER UPDATED BUILDING FOOTPRINT	KK	MFD/AA

**811**  
 Know what's below.  
 Call before you dig.  
 NEW JERSEY  
 YOU MUST CALL 811 BEFORE ANY EXCAVATION WHETHER IT'S ON PRIVATE OR PUBLIC LAND.  
 1-800-272-1000  
 www.nj-811.org

**ISSUED FOR MUNICIPAL & AGENCY REVIEW & APPROVAL**

THIS DRAWING IS INTENDED FOR MUNICIPAL AND/OR AGENCY REVIEW AND APPROVAL. IT IS NOT INTENDED AS A CONSTRUCTION DOCUMENT UNLESS INDICATED OTHERWISE.

PROJECT No.: NJA250129 00-1A  
 DRAWN BY: RS  
 CHECKED BY: MFD/AA  
 DATE: 05/27/2025  
 CAD ID: P-PLAD-AMEN

**PRELIMINARY AND FINAL SITE PLAN**

FOR  
**AMS ACQUISITIONS, LLC**  
 MARLTON CROSSING AMENITY COURTYARD SCHEMATIC DESIGN  
 BLK: 24.21 | LOT: 3  
 100-112 CENTRE BOULEVARD  
 EVESHAM TOWNSHIP  
 BURLINGTON COUNTY  
 NEW JERSEY

**BOHLER**  
 BOHLER, LLC  
 30 INDEPENDENCE BLVD., SUITE 200  
 WARREN, NJ 07059  
 Phone: (908) 688-6300  
 Fax: (908) 754-4401  
 www.BohlerEngineering.com  
 NJ CERT. OF AUTHORIZATION NO. 24G28400600 & MH000122

**A. M. ALEXANDER**  
 LICENSED LANDSCAPE ARCHITECT  
 NEW JERSEY LICENSE NO. 01-460099700

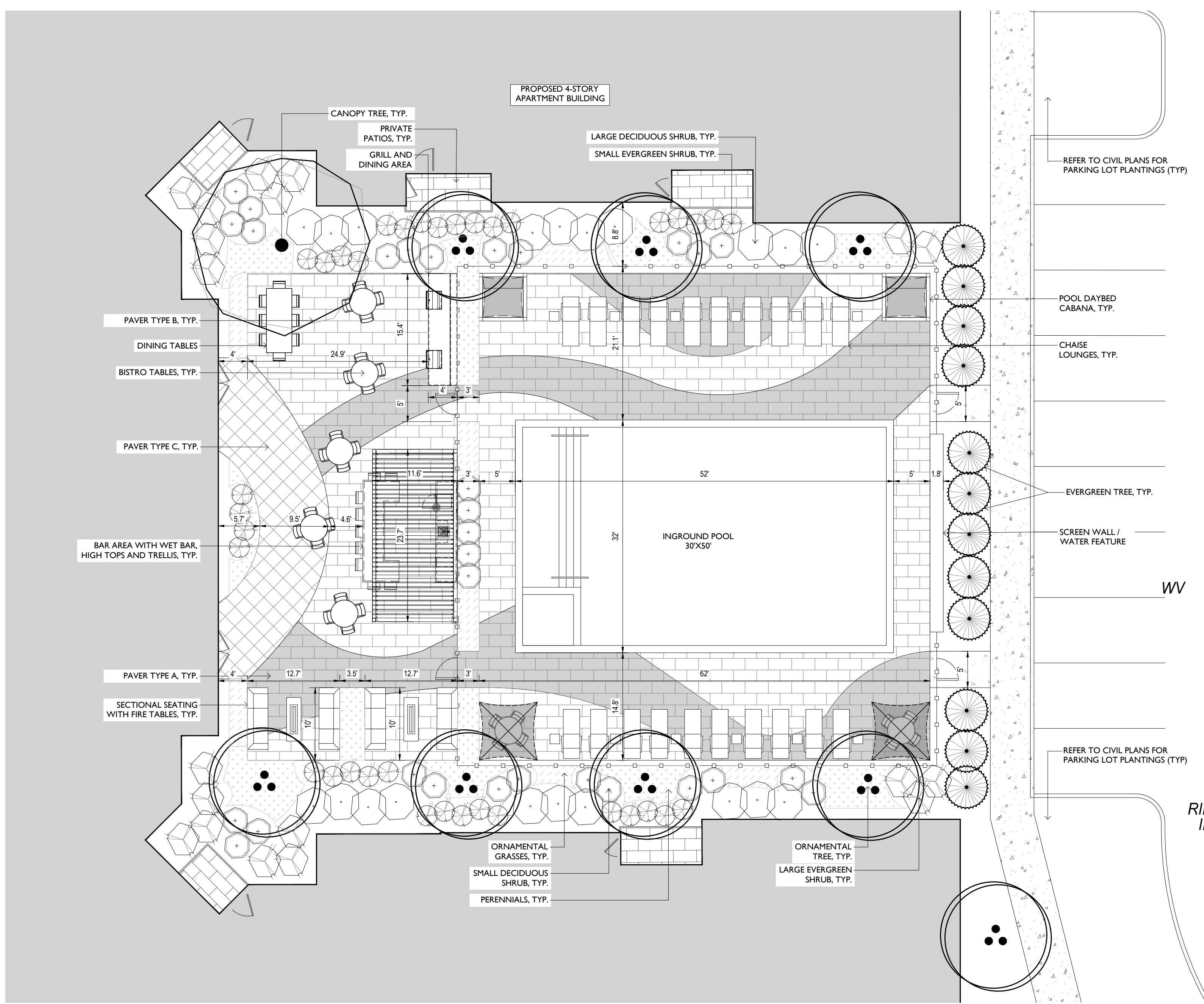
SHEET TITLE:

**COURTYARD 'B'  
 SITE LAYOUT AND  
 LANDSCAPE PLAN**

SHEET NUMBER:

**L-201**

REVISION 1 - 07/22/2025



**PLANT SCHEDULE**

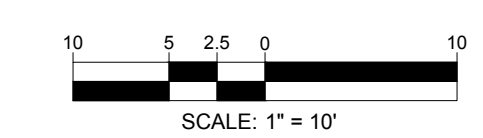
	CANOPY TREE CARPINUS CAROLINIANA / AMERICAN HORNBEAM GLEDTISIA TRIACANTHOS INERMIS 'SKYCOLE' / SKYLINE THORNLESS HONEY LOCUST	2.5' CAL., B&B 2.5' CAL., B&B	
	ORNAMENTAL TREE ACER GRISEUM / PAPERBARK MAPLE AMELANCHIER X GRANDIFLORA 'AUTUMN BRILLIANCE' / AUTUMN BRILLIANCE SERVICEBERRY BETULA NIGRA 'HERITAGE' / HERITAGE RIVER BIRCH CERCIS CANADENSIS / EASTERN REDBUD CORNUS FLORIDA / EASTERN DOGWOOD MAGNOLIA VIRGINIANA / SWEETBAY MAGNOLIA	2.2 1/2' CAL., B&B 2.2 1/2' CAL., B&B 12-14' B&B 2.2 1/2' CAL., B&B 2.2 1/2' CAL., B&B 2.2 1/2' CAL., B&B	
	EVERGREEN TREE JUNIPERUS CHINENSIS 'HETZI' / COLUMNARIS / HETZI COLUMN JUNIPER THUJA OCCIDENTALIS 'NIGRA' / BLACK ARBORVITAE	6-7', B&B 6-7', B&B	
	SMALL EVERGREEN SHRUB ILEX CRENATA 'GREEN LUSTRE' / GREEN LUSTER JAPANESE HOLLY ILEX GLABRA 'COMPACTA' / COMPACT INKBERRY PRUNUS LAUROCERASUS 'OTTO LUYKEN' / OTTO LUYKEN ENGLISH LAUREL TAXUS X MEDIA 'DENSIFORMIS' / DENSE YEW	24-30", CONTAINER 24-30", CONTAINER 24-30", CONTAINER/B&B 24-30", B&B	4' o.c. 3.5' o.c. 4' o.c. 4' o.c.
	LARGE EVERGREEN SHRUB ILEX CRENATA 'STEEDS' / STEEDS JAPANESE HOLLY TAXUS X MEDIA 'HICKSII' / HICKS YEW VIBURNUM RHYTHIDOPHYLLUM / LEATHERLEAF VIBURNUM	30-36", CONTAINER 30-36", B&B 3-4', B&B	3.5' o.c. 3.5' o.c. 5' o.c.
	LARGE DECIDUOUS SHRUB ARONIA ARBUTIFOLIA 'BRILLIANTISSIMA' / BRILLIANT RED CHOKEBERRY CLETHRA ALNIFOLIA / SUMMERSWEET CLETHRA HYDRANGEA PANICULATA 'LIMELIGHT' / LIMELIGHT PANICLE HYDRANGEA ILEX VERTICILLATA 'JIM DANDY' / JIM DANDY WINTERBERRY ILEX VERTICILLATA 'WINTER RED' / WINTER RED WINTERBERRY ITEA VIRGINICA 'HENRY'S GARNET' / HENRY'S GARNET SWEETSPIRE VIBURNUM DENTATUM 'CHRISTOM' / BLUE MUFFIN VIBURNUM	3-4', B&B 24-30", CONTAINER 3-4', CONTAINER/B&B 30-36", CONTAINER 30-36", CONTAINER 30-36", CONTAINER 3-4', B&B	5' o.c. 4' o.c. 4' o.c. 5.5' o.c. 4' o.c. 4' o.c. 5' o.c.
	SMALL DECIDUOUS SHRUB CLETHRA ALNIFOLIA 'COMPACTA' / COMPACT SUMMERSWEET FOTHERGILLA GARDENII / DWARF FOTHERGILLA HYDRANGEA MACROPHYLLA BALMER / ENDLESS SUMMER HYDRANGEA SPIRAEA X BIMALDA 'ANTHONY WATERER' / ANTHONY WATERER SPIRAEA	18-24", CONTAINER 18-24", CONTAINER 24-30", CONTAINER 18-24", CONTAINER	4' o.c. 3.5' o.c. 4' o.c. 3' o.c.
	ORNAMENTAL GRASS CALAMAGROSTIS X ACUTIFLORA 'KARL FOERSTER' / KARL FOERSTER FEATHER REED GRASS CAREX MORROWII 'ICE DANCE' / ICE DANCE JAPANESE SEDGE HAKONECHLOA MACRA 'AUREOLA' / GOLDEN VARIEGATED FOREST GRASS PANICUM VIRGATUM 'PRAIRIE FIRE' / PRAIRIE FIRE SWITCH GRASS	3 GAL., CONTAINER 3 GAL., CONTAINER 3 GAL., CONTAINER 3 GAL., CONTAINER	36" o.c. 18" o.c. 36" o.c. 36" o.c.
	PERENNIAL COREOPSIS VERTICILLATA 'MOONBEAM' / THREADLEAF COREOPSIS HEMEROCALLIS X 'STELLA DE ORO' / STELLA DE ORO DAYLILY LIRIOPE MUSCARI 'BIG BLUE' / BIG BLUE LILYTURF NEPETA X FAASSENII 'WALKER'S LOW' / WALKER'S LOW CATMINT ROSA X 'MEGALPHO' / RED DRIFT® GROUNDCOVER ROSE RUDEBECKIA FULGIDA SULLIVANTI 'GOLDSTURM' / GOLDSTURM BLACK EYED SUSAN	1 GAL., CONTAINER 1 GAL., CONTAINER 1 GAL., CONTAINER 3 GAL., CONTAINER 3 GAL., CONTAINER 1 GAL., CONTAINER	15" o.c. 12" o.c. 15" o.c. 18" o.c. 24" o.c. 18" o.c.

**LANDSCAPE NOTES**

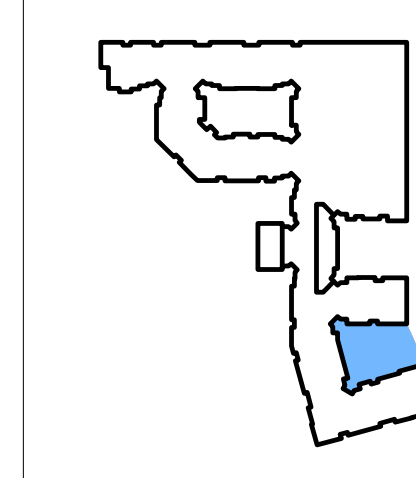
1. PLANTING SCHEDULE PROVIDED HEREON FOR INFORMATIONAL PURPOSES ONLY FOR AGENCY REVIEW AND APPROVAL.
2. FINAL DETAILING AND SPECIFICATION OF LANDSCAPE PLANTINGS AND TREATMENTS TO BE DEVELOPED UPON FINAL CONSTRUCTION DOCUMENTATION.
3. PLANT MATERIAL SUBSTITUTIONS WITHIN ALL AMENITY COURTYARDS MUST BE FORMALLY SUBMITTED TO BOHLER AND THE MUNICIPALITY'S ENGINEERING AND LANDSCAPE CONSULTANTS FOR REVIEW AND APPROVAL PRIOR TO INSTALLATION.
4. ALL PROPOSED LANDSCAPE BEDS ARE TO BE TREATED WITH A 3" THICK LAYER OF DOUBLE SHREDDED HARDWOOD BARK MULCH.

**GENERAL NOTES**

1. THIS PLAN WAS PREPARED STRICTLY AND SOLELY BASED UPON INFORMATION IDENTIFIED IN THE PLAN REFERENCES.
2. THIS PLAN IS PREPARED FOR LANDSCAPE PRESENTATION PURPOSES ONLY, AND IS NOT INTENDED TO AND SHOULD NOT BE UTILIZED AS A CONSTRUCTION DOCUMENT.
3. THE EXISTING CONDITIONS SHOWN HEREON ARE BASED UPON PLANS ENTITLED, "PLAN OF SURVEY & TOPOGRAPHY, BLOCK 24.02 LOT 1 & BLOCK 24.21 LOT 3, 80 & 100 CENTRE BOULEVARD, EVESHAM TOWNSHIP, BURLINGTON COUNTY, NEW JERSEY" DRAWING NO. 2025-07380-SUR, PREPARED BY TAYLOR WISEMAN & TAYLOR, DATED MAY 1, 2025.
4. PROPOSED LANDSCAPE ARCHITECTURAL FEATURES SHOWN HEREON ARE SCHEMATIC AND SUBJECT TO CHANGE BASED UPON FINAL CONSTRUCTION DOCUMENTATION.
5. DIMENSIONS ARE SHOWN FOR INFORMATIONAL PURPOSES ONLY.
6. REFER TO THE LATEST CIVIL DOCUMENTS PREPARED BY TAYLOR WISEMAN & TAYLOR FOR OVERALL SITE, EXISTING CONDITIONS, DEMOLITION, GRADING, DRAINAGE, UTILITY, LANDSCAPE AND LIGHTING PLANS.
7. REFER TO THE LATEST CIVIL DOCUMENTS PREPARED BY TAYLOR WISEMAN & TAYLOR FOR ALL NOTES AND DETAILS NOT INCLUDED IN THIS LANDSCAPE PLAN.
8. REFER TO THE LATEST ARCHITECTURAL DOCUMENTS PREPARED BY MINNO WASKO ARCHITECTS AND PLANNERS FOR PRIVATE PATIOS.



G:\0220\120129\00\CADD\DRAWINGS\PLAN SET\LANDSCAPE ARCHITECTURE PLAN\PLAD-AMEN-NJA250129 00-1A-1-2025\LAYOUT\_L-201 AMEN B



KEY

**BOHLER**  
 SITE CIVIL AND CONSULTING ENGINEERING  
 PROGRAM MANAGEMENT  
 LANDSCAPE ARCHITECTURE  
 SUSTAINABLE DESIGN  
 PERMITTING SERVICES  
 TRANSPORTATION SERVICES

**REVISIONS**

REV	DATE	COMMENT	DRAWN BY	CHECKED BY
1	07/22/2025	PER UPDATED BUILDING FOOTPRINT	KK	MFD/AA

**811**  
 Know what's below.  
 Call before you dig.  
 NEW JERSEY  
 YOU MUST CALL 811 BEFORE ANY EXCAVATION WHETHER IT'S ON PRIVATE OR PUBLIC LAND.  
 1-800-272-1000  
 www.nj-811.org

**ISSUED FOR MUNICIPAL & AGENCY REVIEW & APPROVAL**

THIS DRAWING IS INTENDED FOR MUNICIPAL AND/OR AGENCY REVIEW AND APPROVAL. IT IS NOT INTENDED AS A CONSTRUCTION DOCUMENT UNLESS INDICATED OTHERWISE.

PROJECT No.: NJA250129-00-1A  
 DRAWN BY: RS  
 CHECKED BY: MFD/AA  
 DATE: 05/27/2025  
 CAD ID: P-PLAD-AMEN

**PRELIMINARY AND FINAL SITE PLAN**

FOR  
**AMS ACQUISITIONS, LLC**  
 MARLTON CROSSING AMENITY COURTYARD SCHEMATIC DESIGN  
 BLK: 24.21 | LOT: 3  
 100-112 CENTRE BOULEVARD  
 EVESHAM TOWNSHIP  
 BURLINGTON COUNTY  
 NEW JERSEY

**BOHLER**  
 BOHLER, LLC  
 30 INDEPENDENCE BLVD., SUITE 200  
 WARREN, NJ 07059  
 Phone: (908) 688-8300  
 Fax: (908) 754-4401  
 www.BohlerEngineering.com  
 NJ CERT. OF AUTHORIZATION NO. 246A28400600 & MH000122

**A. M. ALEXANDER**  
 LICENSED LANDSCAPE ARCHITECT  
 NEW JERSEY LICENSE NO. 150099700

SHEET TITLE:  
**COURTYARD 'C'  
 SITE LAYOUT AND  
 LANDSCAPE PLAN**

SHEET NUMBER:  
**L-301**

REVISION 1 - 07/22/2025

**PLANT SCHEDULE**

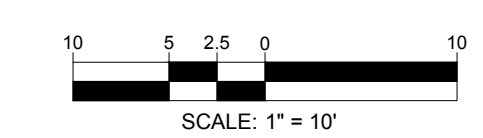
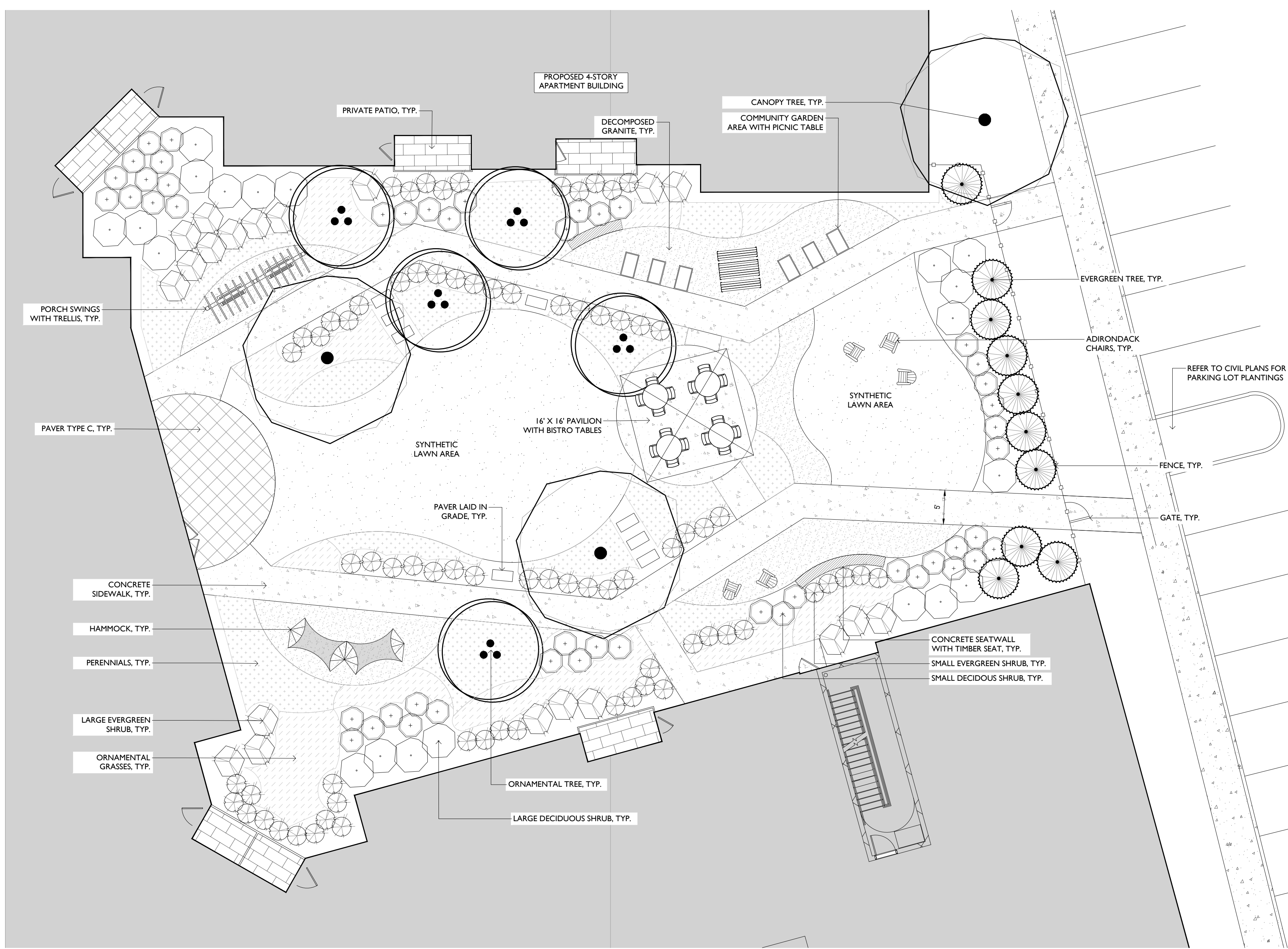
	CANOPY TREE CARPINUS CAROLINIANA / AMERICAN HORNBEAM GLEDTISIA TRIACANTHOS INERMIS 'SKYCOLE' / SKYLINE THORNLESS HONEY LOCUST	2.5' CAL., B&B 2.5' CAL., B&B	
	ORNAMENTAL TREE ACER GRISEUM / PAPERBARK MAPLE AMELANCHIER X GRANDIFLORA 'AUTUMN BRILLIANCE' / AUTUMN BRILLIANCE SERVICEBERRY BETULA NIGRA 'HERITAGE' / HERITAGE RIVER BIRCH CERCIS CANADENSIS / EASTERN REDBUD CORNUS FLORIDA / EASTERN DOGWOOD MAGNOLIA VIRGINIANA / SWEETBAY MAGNOLIA	2.2 1/2" CAL., B&B 2.2 1/2" CAL., B&B 12-14" B&B 2.2 1/2" CAL., B&B 2.2 1/2" CAL., B&B 2.2 1/2" CAL., B&B	
	EVERGREEN TREE JUNIPERUS CHINENSIS 'HETZI' / COLUMNARIS / HETZI COLUMN JUNIPER THUJA OCCIDENTALIS 'NIGRA' / BLACK ARBORVITAE	6-7', B&B 6-7', B&B	
	SMALL EVERGREEN SHRUB ILEX CRENATA 'GREEN LUSTRE' / GREEN LUSTER JAPANESE HOLLY ILEX GLABRA 'COMPACTA' / COMPACT INKBERRY PRUNUS LAUROCERASUS 'OTTO LUYKEN' / OTTO LUYKEN ENGLISH LAUREL TAXUS X MEDIA 'DENSIFORMIS' / DENSE YEW	24-30", CONTAINER 24-30", CONTAINER 24-30", CONTAINER/B&B 24-30", B&B	4" o.c. 3.5" o.c. 4" o.c. 4" o.c.
	LARGE EVERGREEN SHRUB ILEX CRENATA 'STEEDS' / STEEDS JAPANESE HOLLY TAXUS X MEDIA 'HICKSII' / HICKS YEW VIBURNUM RHYTHIDOPHYLLUM / LEATHERLEAF VIBURNUM	30-36", B&B 30-36", B&B 3-4', B&B	3.5" o.c. 3.5" o.c. 5" o.c.
	LARGE DECIDUOUS SHRUB ARONIA ARBUTIFOLIA 'BRILLIANTISSIMA' / BRILLIANT RED CHOKEBERRY CLETHRA ALNIFOLIA / SUMMERSWEET CLETHRA HYDRANGEA PANICULATA 'LIMELIGHT' / LIMELIGHT PANICLE HYDRANGEA ILEX VERTICILLATA 'JIM DANDY' / JIM DANDY WINTERBERRY ILEX VERTICILLATA 'WINTER RED' / WINTER RED WINTERBERRY ITEA VIRGINICA 'HENRY'S GARNET' / HENRY'S GARNET SWEETSPICE VIBURNUM DENTATUM 'CHRISTOM' / BLUE MUFFIN VIBURNUM	3-4', B&B 24-30", CONTAINER 34", CONTAINER/B&B 30-36", CONTAINER 30-36", CONTAINER 30-36", CONTAINER 3-4', B&B	5" o.c. 4" o.c. 4" o.c. 5.5" o.c. 4" o.c. 4" o.c. 5" o.c.
	SMALL DECIDUOUS SHRUB CLETHRA ALNIFOLIA 'COMPACTA' / COMPACT SUMMERSWEET FOTHERGILLA GARDENII / DWARF FOTHERGILLA HYDRANGEA MACROPHYLLA BALMER / ENDLESS SUMMER HYDRANGEA SPIRAEA X BIMALDA 'ANTHONY WATERER' / ANTHONY WATERER SPIRAEA	18-24", CONTAINER 18-24", CONTAINER 24-30", CONTAINER 18-24", CONTAINER	4" o.c. 3.5" o.c. 4" o.c. 3" o.c.
	ORNAMENTAL GRASS CALAMAGROSTIS X ACUTIFLORA 'KARL FOERSTER' / KARL FOERSTER FEATHER REED GRASS CAREX MORROWII 'ICE DANCE' / ICE DANCE JAPANESE SEDGE HAKONECHLOA MACRA 'AUROEA' / GOLDEN VARIEGATED FOREST GRASS Panicum VIRGATUM 'PRAIRIE FIRE' / PRAIRIE FIRE SWITCH GRASS	3 GAL., CONTAINER 3 GAL., CONTAINER 3 GAL., CONTAINER 3 GAL., CONTAINER	36" o.c. 18" o.c. 36" o.c. 36" o.c.
	PERENNIAL COREOPSIS VERTICILLATA 'MOONBEAM' / THREADLEAF COREOPSIS HEMEROCALLIS X 'STELLA DE ORO' / STELLA DE ORO DAYLILY LIRIOPE MUSCARI 'BIG BLUE' / BIG BLUE LILYTURF NEPETA X FAASSENII 'WALKER'S LOW' / WALKER'S LOW CATMINT ROSA X 'MEIGALPHO' / RED DRIFT® GROUNDCOVER ROSE RUDBECKIA FULGIDA SULLIVANTI 'GOLDSTURM' / GOLDSTURM BLACK EYED SUSAN	1 GAL., CONTAINER 1 GAL., CONTAINER 1 GAL., CONTAINER 1 GAL., CONTAINER 3 GAL., CONTAINER 1 GAL., CONTAINER	15" o.c. 12" o.c. 15" o.c. 18" o.c. 24" o.c. 18" o.c.

**LANDSCAPE NOTES**

1. PLANTING SCHEDULE PROVIDED HEREON FOR INFORMATIONAL PURPOSES ONLY FOR AGENCY REVIEW AND APPROVAL.
2. FINAL DETAILING AND SPECIFICATION OF LANDSCAPE PLANTINGS AND TREATMENTS TO BE DEVELOPED UPON FINAL CONSTRUCTION DOCUMENTATION.
3. PLANT MATERIAL SUBSTITUTIONS WITHIN ALL AMENITY COURTYARDS MUST BE FORMALLY SUBMITTED TO BOHLER AND THE MUNICIPALITY'S ENGINEERING AND LANDSCAPE CONSULTANTS FOR REVIEW AND APPROVAL PRIOR TO INSTALLATION.
4. ALL PROPOSED LANDSCAPE BEDS ARE TO BE TREATED WITH A 3" THICK LAYER OF DOUBLE SHREDDED HARDWOOD BARK MULCH.

**GENERAL NOTES**

1. THIS PLAN WAS PREPARED STRICTLY AND SOLELY BASED UPON INFORMATION IDENTIFIED IN THE PLAN REFERENCES.
2. THIS PLAN IS PREPARED FOR LANDSCAPE PRESENTATION PURPOSES, ONLY, AND IS NOT INTENDED TO AND SHOULD NOT BE UTILIZED AS A CONSTRUCTION DOCUMENT.
3. THE EXISTING CONDITIONS SHOWN HEREON ARE BASED UPON PLANS ENTITLED, "PLAN OF SURVEY & TOPOGRAPHY, BLOCK 24.02 LOT 1 & BLOCK 24.21 LOT 3, 80 & 100 CENTRE BOULEVARD, EVESHAM TOWNSHIP, BURLINGTON COUNTY, NEW JERSEY" DRAWING NO. 2025-07380-SUR, PREPARED BY TAYLOR WISEMAN & TAYLOR, DATED MAY 1, 2025.
4. PROPOSED LANDSCAPE ARCHITECTURAL FEATURES SHOWN HEREON ARE SCHEMATIC AND SUBJECT TO CHANGE BASED UPON FINAL CONSTRUCTION DOCUMENTATION.
5. DIMENSIONS ARE SHOWN FOR INFORMATIONAL PURPOSES ONLY.
6. REFER TO THE LATEST CIVIL DOCUMENTS PREPARED BY TAYLOR WISEMAN & TAYLOR FOR OVERALL SITE, EXISTING CONDITIONS, DEMOLITION, GRADING, DRAINAGE, UTILITY, LANDSCAPE AND LIGHTING PLANS.
7. REFER TO THE LATEST CIVIL DOCUMENTS PREPARED BY TAYLOR WISEMAN & TAYLOR FOR ALL NOTES AND DETAILS NOT INCLUDED IN THIS LANDSCAPE PLAN.
8. REFER TO THE LATEST ARCHITECTURAL DOCUMENTS PREPARED BY MINNO WASKO ARCHITECTS AND PLANNERS FOR PRIVATE PATIOS.



G:\0225\129\129-00\CADD\DRAWINGS\PLAN SET\LANDSCAPE ARCHITECTURE PLAN SET\PLAD-AMEN.NJA250129-00-1A-301-AMEN.C



