

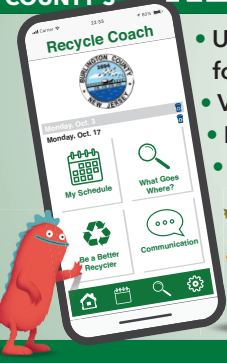
# BURLINGTON COUNTY 2024 RECYCLING BROCHURE

There is a **QUICK** and **EASY** way to learn how to recycle hundreds of items!

**FREE!**

DOWNLOAD BURLINGTON COUNTY'S

## RECYCLE COACH APP



- Use the App's "What Goes Where" feature for fast answers
- View recycling calendar with paper shredding days
- Report missed pickups and cart issues
- Get alerts for special recycling events



No smartphone? No problem! For a computer-friendly version, visit [burlcorecycles.com](http://burlcorecycles.com).

## January - December 2024

Recycling cart questions?  
Contact your municipality.

### Curbside Recycling Issues:

609-267-6889 • Email: [recycling@otcbc.org](mailto:recycling@otcbc.org)

### General Recycling Information:

609-499-1001 ext. 4309

Email: [recycle@co.burlington.nj.us](mailto:recycle@co.burlington.nj.us)

TAKE A VIRTUAL TOUR OF THE RECYCLING PLANT AT [BURLCORECYCLES.COM](http://BURLCORECYCLES.COM)

**YOUR RECYCLING PROGRAM IS FUNDED BY THE BURLINGTON COUNTY BOARD OF COMMISSIONERS.**



## BURLINGTON COUNTY REGIONAL CURBSIDE RECYCLING PROGRAM

### RECYCLING DATES FOR PAPER, CARDBOARD, BOTTLES & CANS

#### MONDAY

#### THURSDAY

**Bordentown City, Bordentown Twp., Chesterfield, Fieldsboro Boro., Florence, Mansfield**

**Eastampton, Lumberton, Mt. Holly, Southampton**

**Beverly, Delanco, Edgewater Park, Willingboro**

**Joint Base MDL, New Hanover, North Hanover, Pemberton Boro., Pemberton Twp., Tabernacle, Washington, Wrightstown**

**2024**  
January 2, 15, 29  
February 12, 26  
March 11, 25  
April 8, 22  
May 6, 20  
June 3, 17

**2024**  
January 8, 22  
February 5, 19  
March 4, 18  
April 1, 15, 29  
May 13, 28  
June 10, 24

**2024**  
January 5, 18  
February 1, 15, 29  
March 14, 28  
April 11, 25  
May 9, 23  
June 6, 20

**2024**  
January 11, 25  
February 8, 22  
March 7, 21  
April 4, 18  
May 2, 16, 31  
June 13, 27

#### TUESDAY

#### FRIDAY

**Medford Lakes, Medford Twp., Shamong**

**Hainesport, Mt. Laurel**

**Burlington City, Burlington Twp., Springfield, Westampton**

**Evesham**

**2024**  
January 3, 16, 30  
February 13, 27  
March 12, 26  
April 9, 23  
May 7, 21  
June 4, 18

**2024**  
January 9, 23  
February 6, 20  
March 5, 19  
April 2, 16, 30  
May 14, 29  
June 11, 25

**2024**  
January 6, 19  
February 2, 16  
March 1, 15, 29  
April 12, 26  
May 10, 24  
June 7, 21

**2024**  
January 12, 26  
February 9, 23  
March 8, 22  
April 5, 19  
May 3, 17  
June 1, 14, 28

#### WEDNESDAY

**Delran, Moorestown, Riverside**

**Cinnaminson, Maple Shade, Palmyra, Riverton**

**2024**  
January 4, 17, 31  
February 14, 28  
March 13, 27  
April 10, 24  
May 8, 22  
June 5, 19

**2024**  
January 10, 24  
February 7, 21  
March 6, 20  
April 3, 17  
May 1, 15, 30  
June 12, 26

DURING THE FOLLOWING HOLIDAY WEEKS, RECYCLABLES WILL BE COLLECTED THE **DAY AFTER** YOUR USUAL COLLECTION DAY, INCLUDING FRIDAY COLLECTIONS, WHICH WILL TAKE PLACE ON SATURDAY.

#### 2024 Holiday Collections:

New Year's Day - Tues. thru Sat.  
Memorial Day - Tues. thru Sat.  
Independence Day - Fri. & Sat.  
Labor Day - Tues. thru Sat.  
Thanksgiving Day - Fri. & Sat.  
Christmas - Thur. thru Sat.

#### NOTE: Recyclables **WILL** be collected on:

Martin Luther King, Jr. Day - January 15, 2024  
President's Day - February 19, 2024  
Good Friday - March 29, 2024  
Juneteenth Day (observed) - June 21, 2024  
Columbus Day - October 14, 2024  
Veteran's Day - November 11, 2024

Curbside Recycling Hotline 609-267-6889 | Email [recycling@otcbc.org](mailto:recycling@otcbc.org)

**WARNING!**  
CARTS WITH PLASTIC BAGS AND OTHER "DO NOT RECYCLE" ITEMS **WILL NOT BE COLLECTED!**

Follow the guide in this brochure or visit [burlcorecycles.com](http://burlcorecycles.com) to "RECYCLE RIGHT"



## NEVER PUT SYRINGES IN RECYCLING!

Correctly package and dispose of syringes at a participating hospital or in your household trash.

### DO NOT RECYCLE!

Two Virtua Hospital locations will accept used syringe containers: (however, no exchanges\*)

- Virtua Marlton of Burlington County**; 90 Brick Rd, Marlton, NJ 08053; Drop-off Location: Security Desk in Main Lobby; Mon. - Fri. from 8:30am to 4pm. Contact Environmental Services Dept. with questions (856) 355-6490.
- Virtua Memorial of Burlington County**; 175 Madison Ave., Mt. Holly, NJ 08060; Drop-off Location: Security Desk in Main Lobby; Mon. - Fri. from 9am to 3pm. Contact Environmental Services Dept. with questions (609) 267-0700.

Virtua will not charge community members to participate in this program. No registration necessary. \*Virtua will NOT replace a used container with an unused container (no exchange program).





# RECYCLING GUIDELINES



**Paper & Cardboard**



**Plastic Bottles & Food Containers**

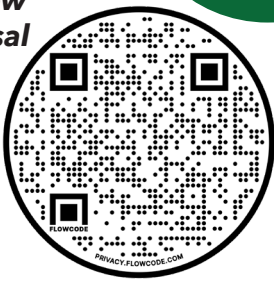


**Glass Bottles & Jars**



**Metal CANS Only**

**Questioning an item?**  
Scan below for disposal options.



**EMPTY and RINSE all bottles, jars, and containers.**

**DO NOT CRUSH plastic bottles and metal cans.**



**Cartons**

*This just in!* **PIZZA BOXES ARE NOW RECYCLABLE.**

Pizza boxes must be clean and empty. A small amount of grease is okay.



## RECYCLING TIPS:

- Set out recycling by 6am. Metal bar must face street.
- Cardboard must be emptied, flattened, and folded.
- If cardboard doesn't fit in container, stack it loosely and neatly next to container.
- Do not jam cardboard into cart. Doing so may result in the cart not being fully emptied.
- Never use boxes to hold ANY recyclables.
- Replace screw top cap on empty plastic beverage bottles.

## DO NOT RECYCLE:

- **NO STYROFOAM**
- No plastic bags, film, or wrap
- No batteries or hazardous waste
- No electronic waste
- No plastic with a or
- No food soiled items



See how your recyclables are sorted. Visit [burlcorecycles.com](http://burlcorecycles.com) to take a virtual tour of our recycling center.

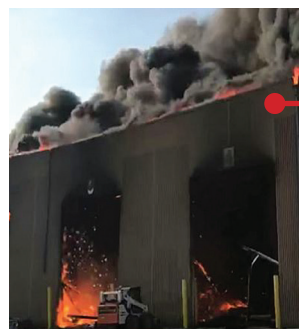
### REMEMBER!

If it's not on our acceptable recycling guidelines list, it does not belong in curbside recycling.

Questions? Call (609) 499-1001 or email [recycle@co.burlington.nj.us](mailto:recycle@co.burlington.nj.us).

# LITHIUM BATTERIES - A HOT TOPIC

Rechargeable batteries can be extremely hazardous when mistakenly put in recycling containers.



**THESE BATTERIES ARE THE MAIN CAUSE OF DANGEROUS AND DAMAGING FIRES AT RECYCLING CENTERS.**

They are used in cellphones, power tools and many household devices.

Rechargeable batteries include Nickel-Cadmium (Ni-Cd), Lithium Ion (Li-Ion) and Small Sealed Lead Acid (SSLA/Pb) batteries. Recycle these at Home Depot, Lowes, Staples and other locations listed at [www.Call2Recycle.org](http://www.Call2Recycle.org).

**NEVER PUT BATTERIES IN YOUR RECYCLING.**

To learn more, visit [burlcorecycles.com](http://burlcorecycles.com), call (609) 499-1001 or download the RecycleCoach App.

## RECYCLING CARTS ARE MUNICIPAL PROPERTY

It is illegal to put trash in your cart or move it to a new property.

*Due to a serious rise in contamination, recycling carts are subject to inspection.*