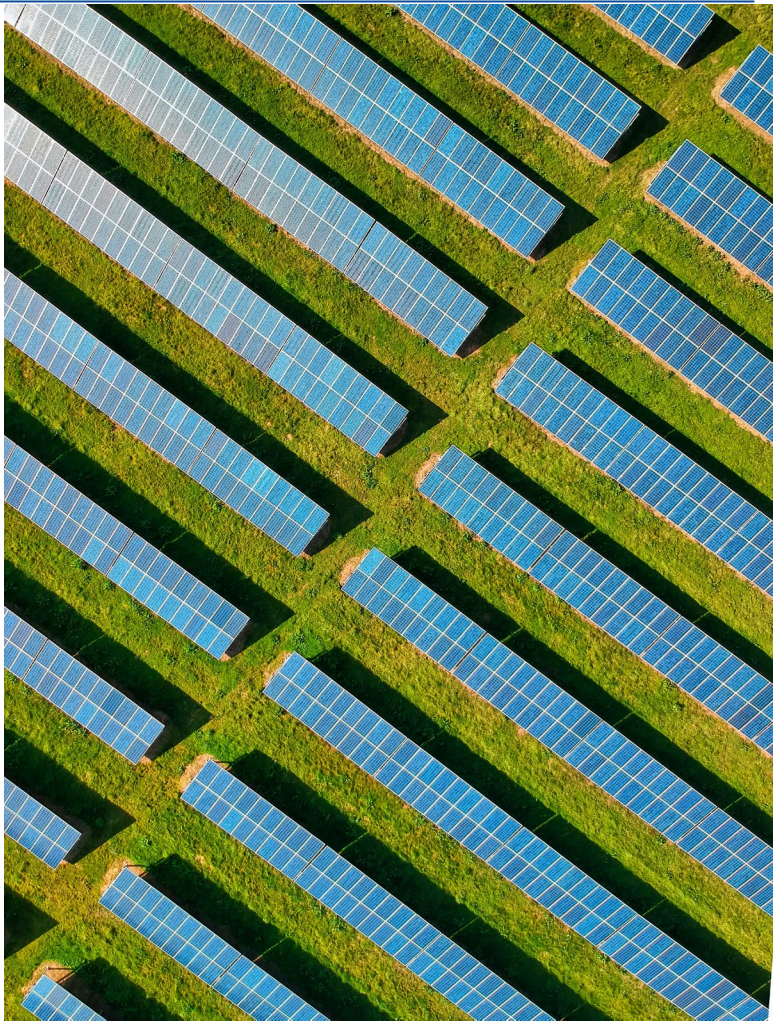


# EVESHAM TOWNSHIP COMMUNITY ENERGY PLAN MEETING

**November 8, 2023**  
**Prepared by Heyer, Gruel & Associates**

*with support from the New Jersey Board of  
Public Utilities and Sustainable Jersey*



# TONIGHT’S MEETING

**1**

**INTRODUCTORY  
PRESENTATION**

**2**

**Q&A, COMMENTS,  
AND INPUT**

**3**

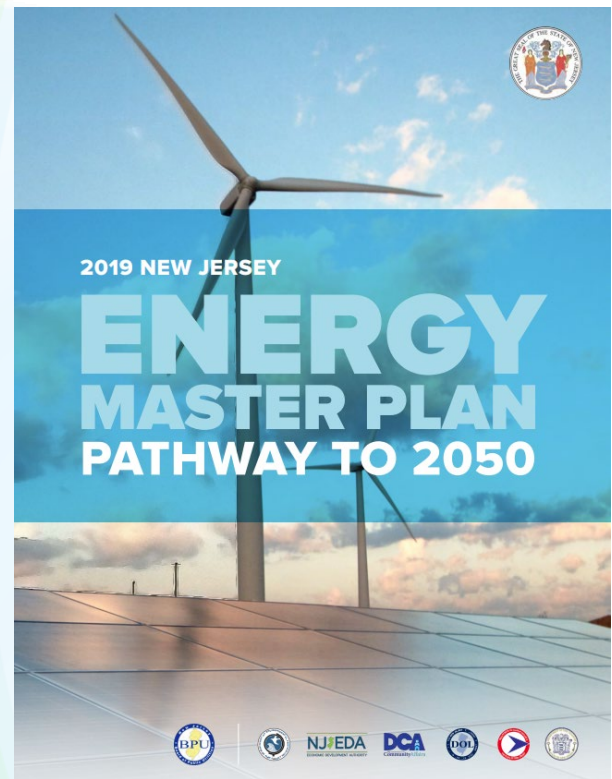
**WRAP-UP AND  
CONCLUSION**

# 1

---

# WHAT IS THE COMMUNITY ENERGY PLAN?

# NJ ENERGY MASTER PLAN



## GOALS

- 1. 100% Clean Energy
- 2. A reduction of carbon emissions to 80% below 2006 levels.

## STRATEGY AREAS

- 1. Transportation Energy/Emissions
- 2. Renewable/Distributed Energy
- 3. Energy Efficiency & Reduce Demand
- 4. Building Sector Energy/Emissions
- 5. Decarbonize/Modernize Energy Systems
- 6. Inclusive Community Energy Planning
- 7. Clean Energy Innovation Economy

## KEY TAKEAWAY

Successful implementation of these goals requires community-level action, including Community Energy Planning.

# NJ BOARD OF PUBLIC UTILITIES COMMUNITY ENERGY PLANNING GRANT

## PURPOSE

To help municipalities collaboratively develop community energy plans and “plan for and invest in energy resilience, renewable energy, and efficiency to work towards a better environment for all residents”

## RESOURCES

- Grant Funding
- Aggregated Community Energy Data
- Community Energy Plan Template + 39 Potential Initiatives

## GRANTEE FOCUS

Assess which initiatives will best contribute to improving **local** energy performance and achieving statewide energy goals

# EVESHAM TOWNSHIP COMMUNITY ENERGY PLAN (CEP)

**1 of 46**

---

Evesham was 1 of 46 municipalities  
to receive the CEP grant in 2022

**10 YEARS**

---

Evesham has been Sustainable  
Jersey certified since 2013, at both  
the Bronze and Silver levels

## **CEP FOCUS**

---

Opportunities for equitable access,  
energy resilience, renewable energy,  
and efficiency

# PROCESS & REQUIREMENTS

## 1. TEAM CREATION

The municipality puts together a working team to prepare the Plan. Evesham’s team is led by the **Environmental Commission** and the **Department of Community Development**.

## 3. OUTREACH

The team conducts stakeholder and community engagement to collect input regarding the selection and prioritization of energy initiatives.

***We are here!***

## 2. CONSIDER INITIATIVES

The team conducts research to evaluate the applicability of the initiatives within the provided template and determines which are feasible at the local level.

## 4. PREPARE & FINALIZE PLAN

The team prepares the Community Energy Plan utilizing the provided resources. The final Plan must be approved and adopted by the Borough Council.

# TOWNSHIP COMMUNITY OVERVIEW

**53%**

In 2020 residential buildings accounted for more than half of Evesham’s electricity usage.

**72%**

During the same time period, residential buildings accounted for 72% of the Township’s natural gas use.

**54%**

Over half of Evesham’s greenhouse gas emissions in 2020 can be attributed to on-road vehicles.

**1%**

Electric vehicles made up 1% of privately owned vehicles in the Township in 2020.

**89%**

Throughout Evesham, 89% of properties are considered “solar viable”.

**7% / 5%**

Between 2018 and 2021, 7% of residential buildings (4 or less units) and 5% of commercial buildings completed energy efficiency projects.

# POTENTIAL STRATEGIES

Strategy Number	Strategy Title	Strategy Description	Impact*	Difficulty to Implement*
1.6	Install Public EV Charging Infrastructure	Install electric vehicle charging infrastructure, including chargers, signage, and safety and accessibility features, for public use.	2-Medium	1-Low
1.7	Encourage Non-Municipal Fleets to Improve Efficiency	Contact local commercial vehicle owners to encourage them to strategically replace vehicles and improve driver efficiency to reduce their fleet's GHG footprint. Offer resources to ease the process, such as procurement tools and incentive information.	2-Medium	3-High
1.8	Encourage Workplace EV Charging Infrastructure	Meet with local employers to ask them to install workplace EV charging. If possible, offer incentives such as promotion in municipal communications, a "ribbon cutting" event with public officials, and/or a fast-tracked permitting process.	1-Low	3-High
1.9	Community EV Outreach	Conduct outreach to inform residents of the options and benefits of EV. Municipalities can generate awareness of electric vehicles on the market by hosting a ride and drive event or EV car show. Many municipalities in NJ hold events in conjunction with the National Drive Electric Week and Drive Electric Earth Day, which offer direct support and resources such as tools to recruit current and potential EV owners	N/A	N/A
<b>Strategy 2: Accelerate Deployment of Renewable Energy and Distributed Energy Resources</b>				
2.1	Adopt Supportive Zoning and Permitting for Private Solar	Provide clear guidance/standards for solar developers and limit barriers to solar adoption such as lengthy permitting and multiple reviews.	3-High	2-Medium
2.2	Post Solar Permitting Checklist	Providing clear guidance/standards for solar developers with a permitting checklist that can be easily found on the municipality's website. Solicit feedback from users and revise checklist based on comments.	3-High	2-Medium
2.3	Adopt Zoning and Permitting for Community Solar	Update municipal zoning ordinances to specifically allow large-scale solar projects, and designate future community solar sites as redevelopment zones. Consider offering direct assistance with permitting, expediting the permitting process, and/or reducing permitting fees for community solar.	3-High	2-Medium
2.4	Train First Responders on Solar	Require training on solar infrastructure for first responders.	N/A	N/A

# STRATEGY SELECTION

## EVALUATION

- Difficulty to Implement\*
- Anticipated Impact\*
- Available Funding Sources
- Necessary Stakeholders
- Potential Obstacles

## IMPLEMENTATION

- Point Person
- Priority Level
- Department(s) Involved
- Planned Start Date / Timeline
- Measures of Success

*\*As defined by Sustainable Jersey within the CEPG Template*

# BENEFITS OF A CEP

## CO-BENEFITS

---

- Improved Air Quality
- Energy Cost Savings
- Job Creation

## INCLUSIVITY

---

The CEP preparation process is designed to be collaborative, inclusive, and equitable.

## OPENS DOORS

---

- Many initiatives are relatively easy to implement
- Open doors to funding and support
- Creates opportunity to make improvements without incurring major costs

# 2

---

## INPUT, Q&A, & COMMENTS

3

CONCLUSION

# CONTACT

## QUESTIONS? EMAIL US AT

**Megan  
Stanley**

---

Senior Planner  
[mstanley@hgapa.com](mailto:mstanley@hgapa.com)

**Hannah  
Davenport**

---

Associate Planner  
[hdavenport@hgapa.com](mailto:hdavenport@hgapa.com)