

Evesham Township 2023 Capital Budget





What is a Capital Budget?

- A plan to fulfill the capital needs of the Township for the current and succeeding 5 years
 - Roads, Bridges, Police Vehicles, Facility Improvements, DPW Heavy Equipment, Land Acquisition, etc.
- Assets acquired must have a minimum useful life of 5 years
- Funding is available until expended or cancelled
- A way to spread the cost of large asset acquisitions evenly over a number of budget years



What a Capital Budget is Not

- A Capital Budget is not a spending authorization – only a fully adopted Capital/Bond Ordinance can authorize capital expenditures
- Cannot include operating or maintenance costs
- Not “kicking the can down the road”
- Funding of the ordinance occurs through either the payment of debt service or funding through the annual budget. Funding term cannot exceed useful life of the asset.



Capital Budgeting Best Practice

- A level amount of Capital Authorizations from one budget cycle to the next
- Allows the funding of ordinances to take the place of old ordinances becoming fully paid off
- Keeps Debt Service and Deferred Charges sections of the budget stable from year to year
- This makes a stable tax rate more attainable



2023's Capital Budgets

- \$5 million in General Capital
- \$398,000 Reappropriating Ordinance in General Capital
 - Utilizing remaining amounts of approved completed projects for current facility improvements
- \$750,000 in Golf Capital
 - No Impact to the taxpayers – fees generated from the operation of the golf course dedicated to funding
- \$2.3 million in Open Space
 - No debt being authorized – fully self funded through 2021's approved Open Space Referendum
- \$1.2 million in Grant Funds dedicated to Capital Projects

2023's General Capital Budget



- \$1,490,100 for Equipment and Vehicle Purchases
 - 5 Police Cruisers
 - IT network hardware and tablets for police vehicles
 - 1 Side loading automated trash truck
 - 2 Tandem axle dump trucks
 - Multiple F250 & F350 pickup/mini dump trucks
 - Brine truck



2023's General Capital Budget (Cont'd)



- \$1,085,000 Facility Improvements
 - Municipal Building HVAC



2023's General Capital Budget (Cont'd)



- \$2,822,900 Road Improvements
 - Continuation of the Township's road program



Elmwood Road



Dutch Road

2023's Golf Capital Budget



- \$750,000 Golf Facility Improvements and Equipment Acquisition
 - Add'l funds for new Driving Range Pro-Shop / Concession building
 - Concessionaire capital contribution match
 - Funds club house aesthetic upgrades
- Mower
- F-250



Golf Course Fountain



Indian Spring Golf Course



** For Conceptual Purposes Only – Planning/Design still On-Going **

2023's Open Space Capital



- \$2,310,689 Open Space Land Acquisition and Recreation Improvements
 - Self-Funding improvements – no debt authorization through the use of 2021's passed Open Space Referendum
 - Little Mill Playground Improvements
 - Land Acquisition
 - Evesboro Downs Park Improvements
 - M-2 Field Replacement

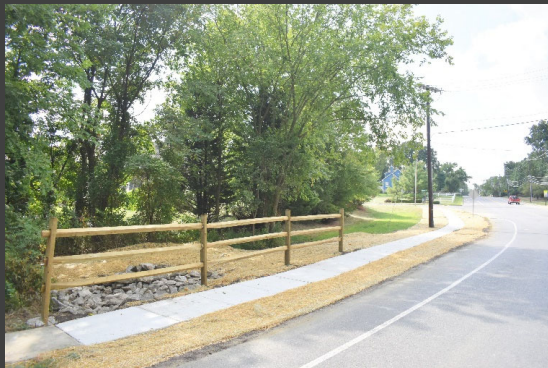


Greenlane Farms Path Improvements

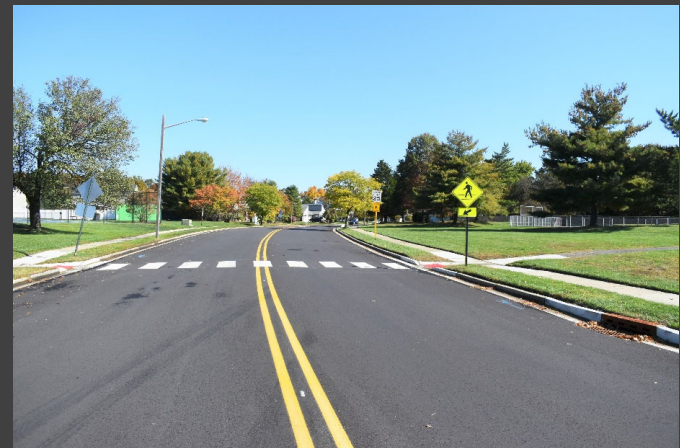
2023's Grant Fund Capital Projects



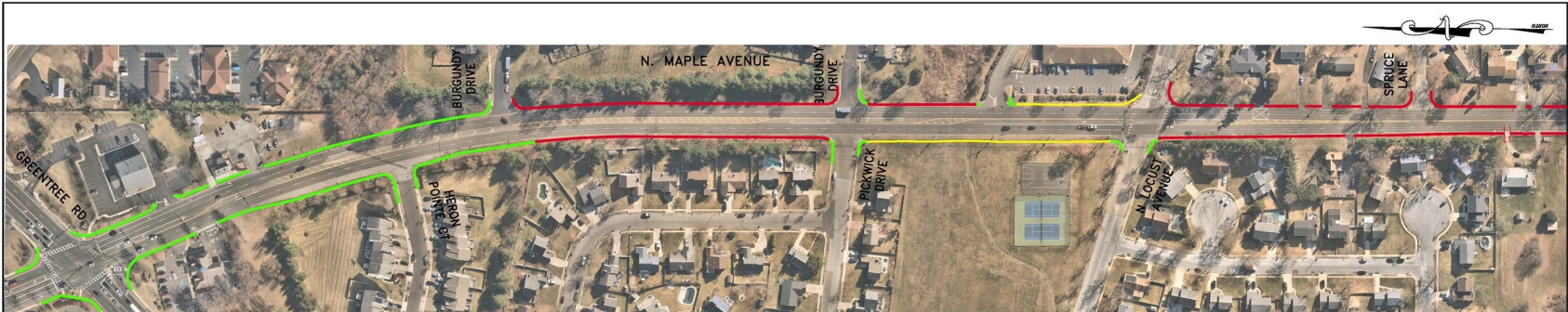
- \$409,000 Safe Streets to Transit Sidewalk Improvements
- \$226,340 NJDOT Crown Royal Paving
- \$495,000 NJDOT Wescott Paving
- \$79,000 DCA Local Recreation Improvements



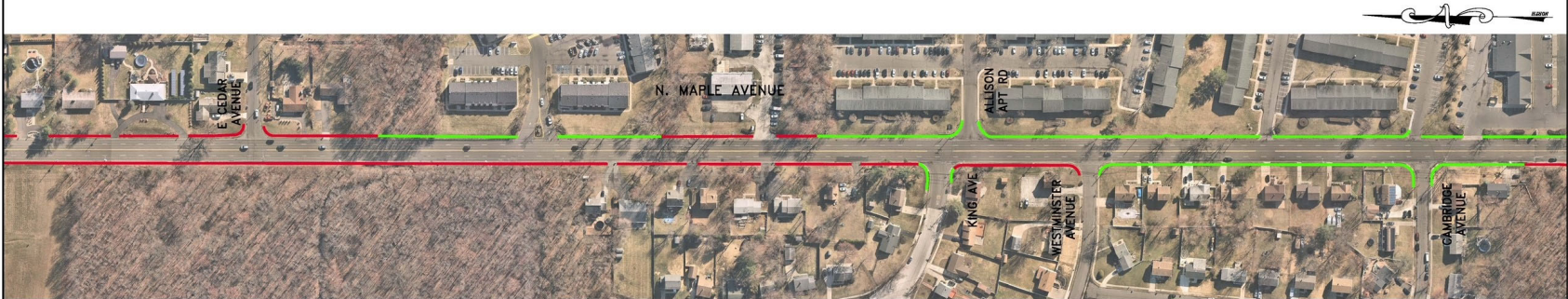
Village Green Sidewalk



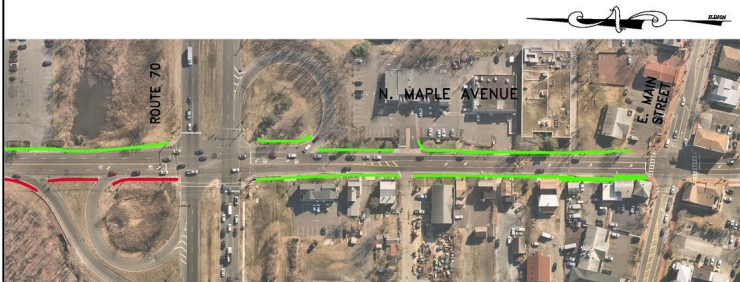
Greenbrook



PLAN
SCALE: 1" = 100'



PLAN
SCALE: 1" = 100'

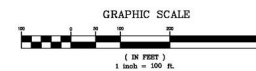


PLAN
SCALE: 1" = 100'

Safe Streets to Transit – Maple Ave Sidewalk Concept Plan

LEGEND:

- EXISTING SIDEWALK (REMAIN) = 2,355 LF
- EXISTING SIDEWALK (REPLACE) = 811 LF
- PROPOSED SIDEWALK = 6,406 LF



CONCEPTUAL PLAN EVESHAM TOWNSHIP, BURLINGTON COUNTY, NEW JERSEY

REMINGTON & VERNICK ENGINEERS
2059 SPRINGDALE ROAD, CHERRY HILL, NJ 08003
(856) 795-9595, FAX (856) 795-1882, WEB SITE ADDRESS: WWW.RVE.COM
Certificate of Authorization: 24 CA 38033300
—ENGINEERING EXCELLENCE—

I:\Local Projects\NJ\Burlington County\EvESHAM - Safe Streets to Transit - N. Maple Ave Sidewalk\031317258 - N. Maple Ave Sidewalk\031317258 - N. Maple Ave Sidewalk.dwg